

**ENRICHING  
THE  
JOURNEY**



**HEALTHY STUDENTS**



**STRONG FAITH AT LCBI**

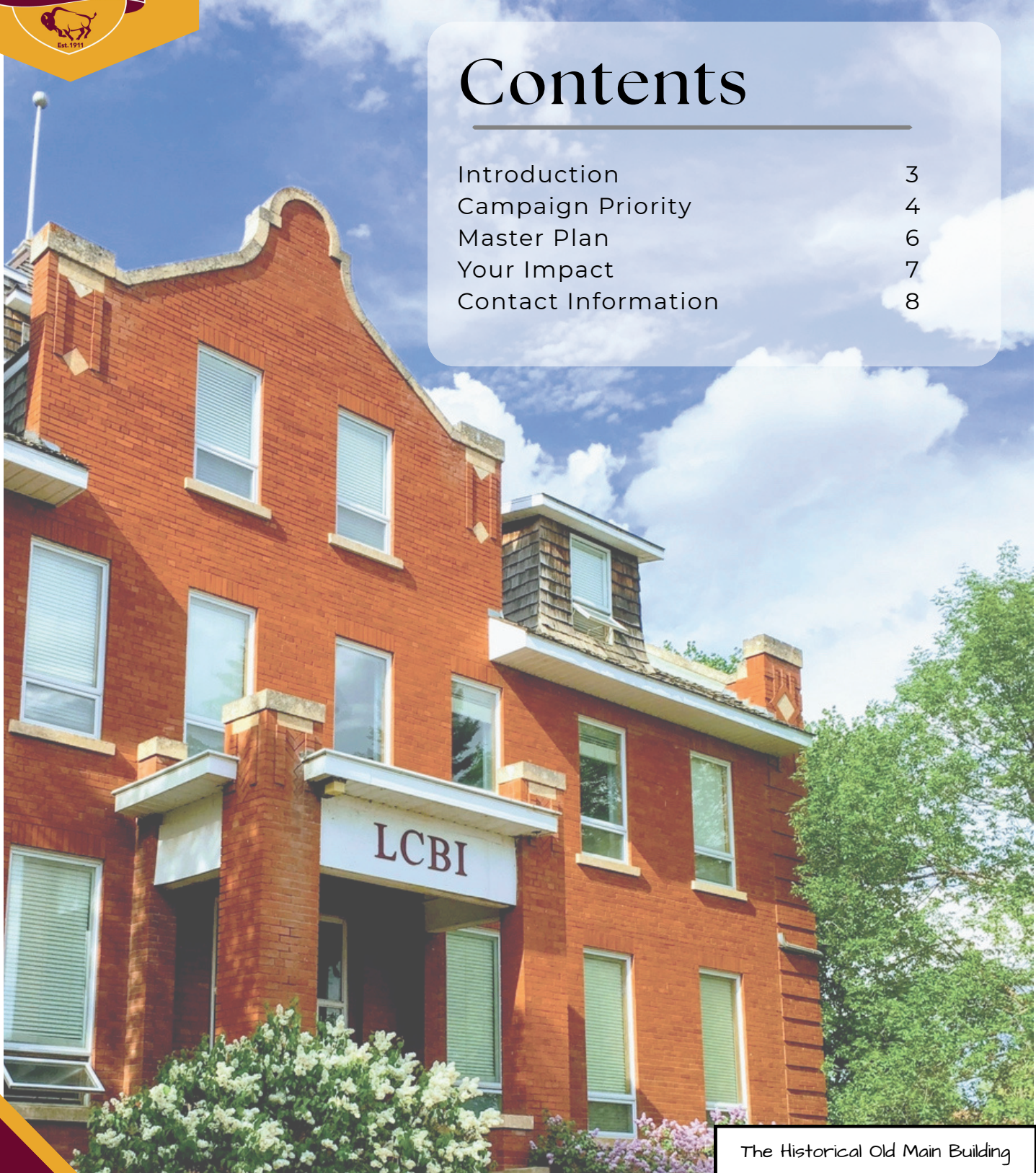
# ENRICHING THE JOURNEY



We invite you to join us as we launch our Enriching the Journey campaign to further upgrade and transform our campus. **Our 5 million dollar campaign will support the health of our students and enhance the quality of their campus experience.** With your generous support, together we aim to create a campus that our students need and deserve.

## Contents

Introduction	3
Campaign Priority	4
Master Plan	6
Your Impact	7
Contact Information	8



The Historical Old Main Building



**Every day at Lutheran Collegiate Bible Institute (LCBI), we see the transformative effect of our faith-focused approach to education on our students.**

Students find a sense of belonging when they join our tight-knit community. Parents tell us that their children are changed for the better through the care received from our dedicated teachers, campus Chaplin, administrative staff, campus life staff, and food services staff. As a result students find models which assist them to bring dedication and commitment to their studies, their families and to their goals in high school and beyond.



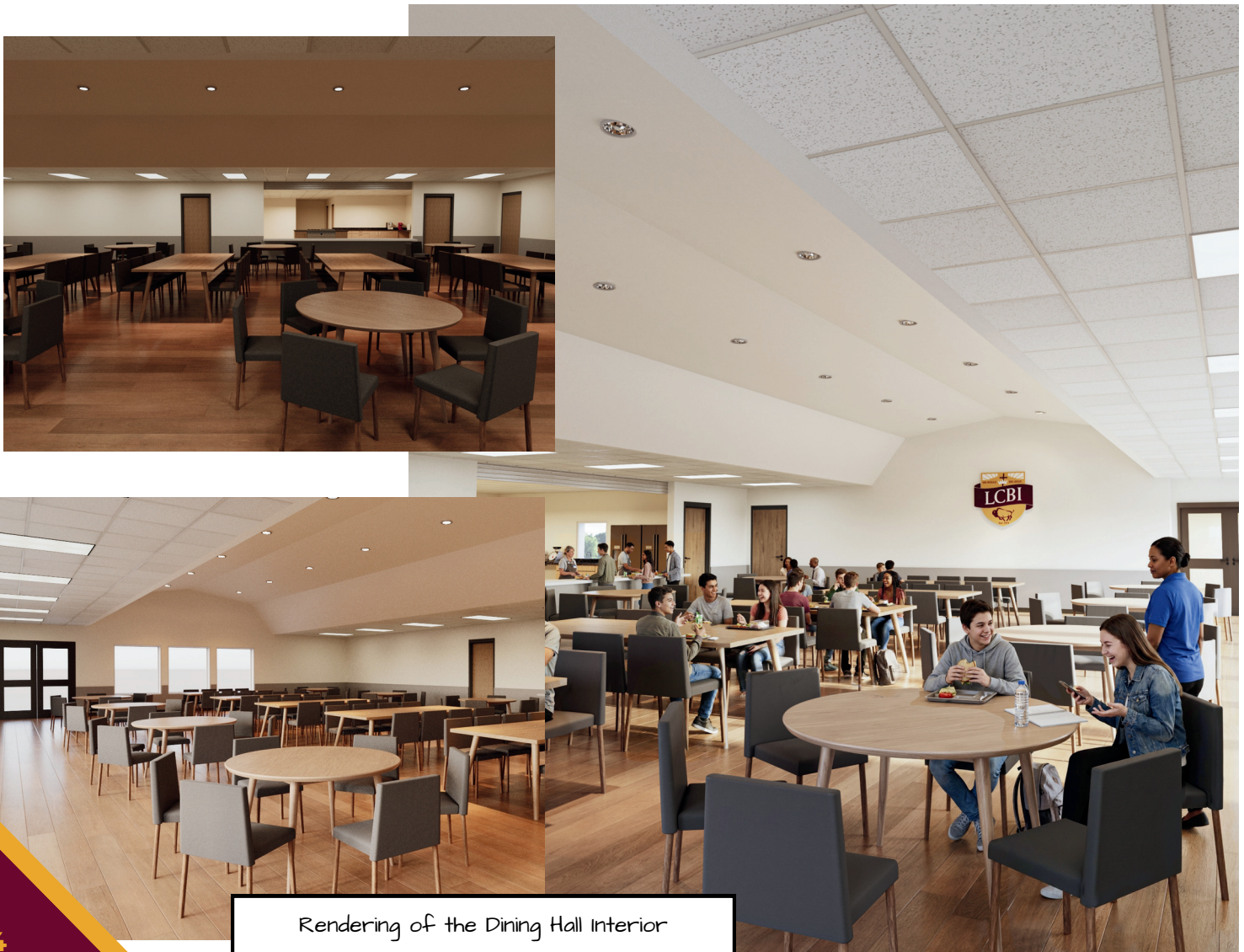
2025/2026 Students & Staff



## CAMPAIGN PRIORITY: Our Food Services Building

Our beautiful campus needs a major upgrade of the kitchen and cafeteria area. The Food-Services facility is a center for daily fellowship for our students. This new facility will provide a well-equipped space for our Food Services staff. The kitchen work area will be equipped with new top-quality commercial equipment designed with everything in mind from pantry storage, refrigeration to food preparation and service. Our students will be the long-term beneficiaries.

For those who have visited LCBI recently you will know that our aged food services facility has served well for so many years and is now ready for replacement to meet our campus needs and to be sure we meet current building codes. Thank you for taking an interest with us in our campus and to consider the opportunity to help nurture the lives of young men and women on a healthy campus for many years to come.



Rendering of the Dining Hall Interior

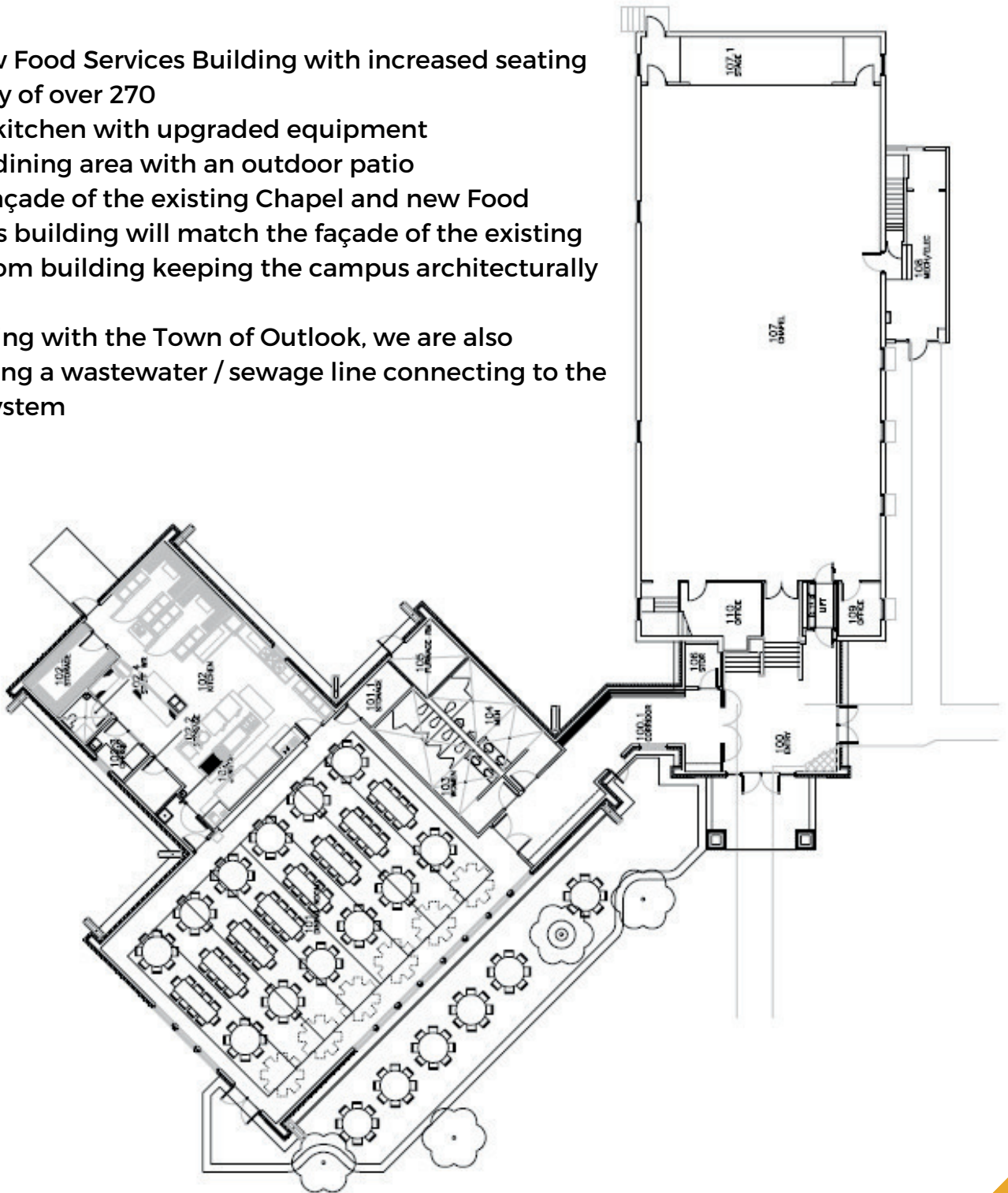
# CAMPAIGN PRIORITY: Our Food Services Building



Enriching  
the  
Journey

**With your campaign donation, we will transform our dining and food services, including:**

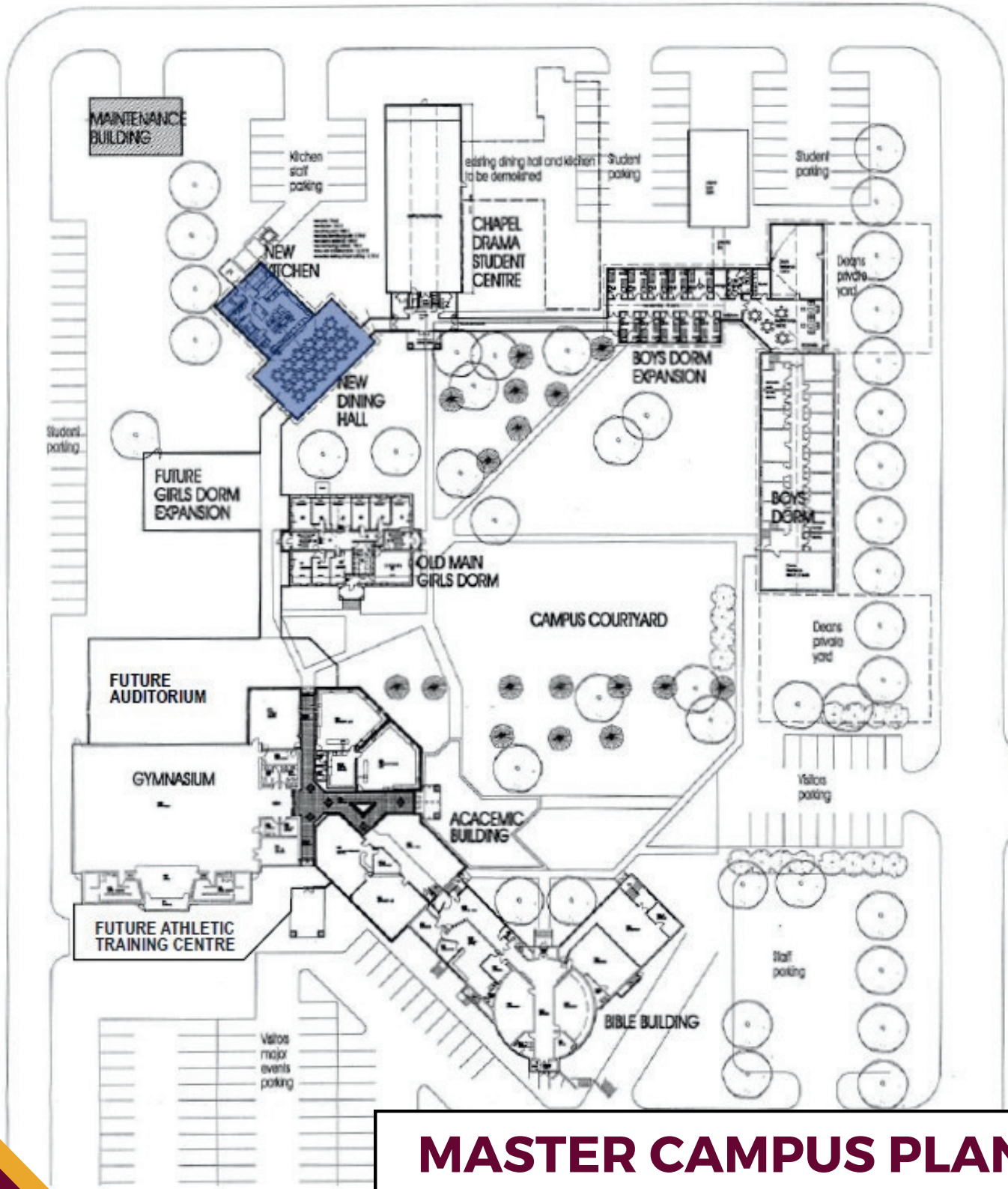
- o A new Food Services Building with increased seating capacity of over 270
- o New kitchen with upgraded equipment
- o New dining area with an outdoor patio
- o The façade of the existing Chapel and new Food Services building will match the façade of the existing classroom building keeping the campus architecturally unified
- o Working with the Town of Outlook, we are also proposing a wastewater / sewage line connecting to the town system





# PHASE I CAMPAIGN GOAL \$5.0 million

With your support, the Enriching the Journey campaign will raise \$5.0 million to transform our campus over the next two years, with our goal to open the new facilities in 2028.



**MASTER CAMPUS PLAN**

# YOUR IMPACT



**Enriching  
the  
Journey**

Investing in our campus through the **Enriching the Journey Campaign** will have numerous benefits for all students and the host of people and events that share this rich community of life, faith and formative education. LCBI provides a rich education, strong spiritual nature, an amazing choral program, with many concerts and other choral events, and highly competitive athletic programs enjoyed by all.

There are a couple other identified goals, should the full amount of this campaign be achieved. Our beautiful gymnasium is well maintained and through heavy use over the years is in need of a new floor.

We have also received a request that LCBI use this opportunity to connect to the town sewage system which will be an additional cost. These are two items we hope will be covered within this 5 million dollar capital campaign above the primary task of completing our new cafeteria.

LCBI seeks a wide variety of gifts to carry out the gracious and disciplined work of the campus, and in this campaign, we need people with their gifts of finance to come and enjoy being a part of this school whose motto remains over the years: **We Would See Jesus**. Enjoy the journey with us.

# ENRICHING THE JOURNEY



## Contact Us:

Should you want further information about LCBI and this campaign, please contact:

**Wayne Hove, MBA**  
**President, LCBI**

Phone: 306-867-8971 ext. 400  
Email: [president@lcbi.sk.ca](mailto:president@lcbi.sk.ca)

**LCBI High School**  
Box 459  
700 Ash Street  
Outlook, Saskatchewan S0L 2N0

[lcbi.sk.ca](http://lcbi.sk.ca)  
[office@lcbi.sk.ca](mailto:office@lcbi.sk.ca)

# CONTINUING THE LEGACY